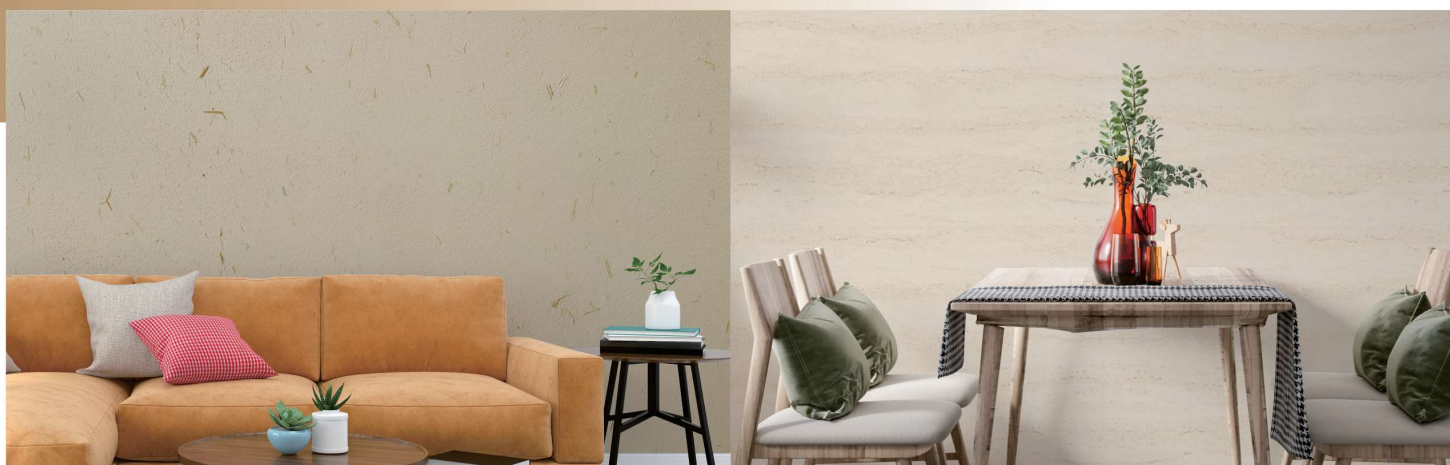


STRAW PAINT RICE TRAVERTINE

稻草漆 | 米洞石



高端艺术壁材
HIGH END ARTISTIC WALL MATERIALS

Plate No. :DCQMDS-202507



稻草漆

STRAW PAINT

CN.

产品介绍 /

稻草漆(又称生态稻草漆、稻草泥)是一种以无机矿物土, 纳米碳酸钙, 石英粉, 纳米粉和无机胶粉为主要原料的水性艺术涂料。

1. 环保安全 /

- 可降解空气中的游离甲醛和重金属污染物, 提升室内空气质量。
- 水性配方, 无毒无味, 施工时无刺激性气味, 接触皮肤无伤害。

2. 卓越性能 /

- 耐久性强, 漆膜牢固, 抗老化性能优异, 使用寿命可达10-15年。
- 防水防霉, 适合潮湿环境; 耐磨耐污, 表面光滑防渗, 维护简便。

3. 装饰性 /

- 纹理多样: 通过调整稻草长度(5-10cm)、密度及施工工艺, 可定制粗犷夯土墙、细腻祥云纹等效果。
- 色彩丰富: 提供40+种颜色选择, 涵盖米白、土黄等自然色系, 以及焦茶、金属色等时尚色调。

4. 功能性优势 /

- 调湿透气: 微孔结构调节室内湿度, 防止结露, 提升舒适度。
- 隔音保温: 稻草纤维增强隔音效果, 辅助保温节能。

施工方面 /

1. 干粉稻草漆施工面积与用量: 规格: 20kg/桶
用量: 粗砂: 2.5-3kg/m²; 中砂: 1.5-2kg/m²;
细砂: 1-1.5kg/m²

2. 施工工具: 批刀、刮板、羊毛辊筒、搅拌机、泡沫板、砂纸架

3. 施工方法:

- 滚涂一遍渗透底漆; 滚涂两遍砂底;
- 干粉兑水比例是30%, 搅拌至无颗粒浆状;
- 批涂两遍稻草漆, 使稻草分布均匀, 表面收光平整;
- 未干时用刮板打圈或拉毛, 制造不规则稻草肌理, 用不锈钢批刀轻压表面, 增强平整度;
- 完全干燥后, 用320目砂纸轻磨凸起部分, 增强立体感;
- 滚涂罩面漆两遍。

EN.

Product Introduction /

Straw paint (also known as ecological straw paint, straw mud) is a water-based art paint with inorganic mineral soil, nano-calcium carbonate, quartz powder, nano-powder and inorganic glue powder as the main raw materials.

Environmental safety /

It can degrade free formaldehyde and heavy metal pollutants in the air and improve indoor air quality.

- water-based formula, non-toxic and odorless, no irritating smell during construction, no harm to skin contact.

Excellent performance /

Strong durability, firm paint film, excellent anti-aging performance, service life can reach 10-15 years.

- Waterproof and mildew-proof, suitable for humid environments; wear-resistant and stain-resistant, with a smooth and impermeable surface and easy maintenance.

Decorative /

Diverse textures: By adjusting the straw length (5-10cm), density and construction technology, you can customize effects such as rough rammed earth walls and delicate auspicious cloud patterns.

- Rich colors: Provide 40+ color options, covering natural colors such as beige and khaki, as well as fashionable tones such as burnt tea and metallic colors.

Functional advantages /

Moisture-regulating and breathable: Microporous structure regulates indoor humidity, prevents condensation and improves comfort.

- Sound insulation and heat preservation: Straw fiber enhances the sound insulation effect and assists in heat preservation and energy saving.

Construction /

1. Construction area and dosage of dry powder straw paint

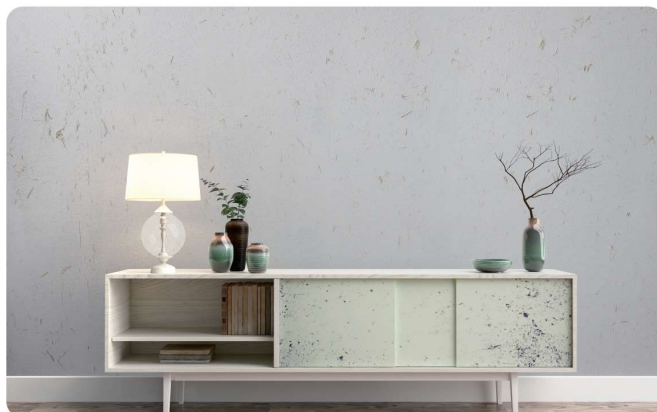
Specification: 20kg/barrel

Dosage: Coarse sand: 2.5-3kg/m²; Medium sand: 1.5-2kg/m²; Fine sand: 1-1.5kg/m²

2. Construction tools: knife, scraper, wool roller, stirrer, foam board, sandpaper holder

3. Construction method

- Roll on one coat of penetrating primer. Roller apply two coats of sand primer.
- The ratio of dry powder to water is 30%, stir until there is no particle slurry.
- Apply two coats of straw paint to make the straw evenly distributed and the surface smooth.
- When it is not dry, use a scraper to make circles or pull the hair to create irregular straw texture, and use a stainless steel knife to lightly press the surface to enhance the flatness.
- After it is completely dry, use 320-grit sandpaper to lightly grind the raised parts to enhance the three-dimensional effect.
- Roll on two coats of topcoat.



米洞石

Rice Travertine

CN.

产品介绍 /

米洞石是一种仿天然洞石纹理的环保艺术涂料,由天然矿石粉(如石灰石、大理石粉)、可再分散乳胶粉及无机颜料制成。

1. 环保安全 /

- 无放射性污染,不含甲醛、苯等有害物质,通过国家环保检测。
- 部分产品具备“分子筛”结构,可吸附空气中游离甲醛、异味,释放负氧离子。

2. 物理性能优越 /

- 耐用性:高硬度、耐擦洗、抗开裂,耐候性强。
- 功能性:透气防潮、防火阻燃。
- 轻质:仅为天然石材1/3重量,减轻墙体负荷。

3. 装饰效果突出 /

- 纹理逼真自然,可定制颜色。
- 表面可打磨抛光,呈现绒麻布或石材质感。
- 大面积呈现出仿自然风化的效果,沧桑厚重的感觉。

施工方面 /

1. 干粉米洞石施工面积与用量:
 - 规格:20kg/桶
 - 用量:粗砂:1.5-2kg/m²; 细砂:1-1.5kg/m²
2. 施工工具:不锈钢批刀、油灰刀、羊毛滚筒、搅拌机、细砂纸
3. 施工方法:
 - 滚涂一遍渗透底漆;
 - 滚涂两遍砂底;
 - 干粉兑水比例是30%,搅拌至无颗粒浆状;
 - 批涂两遍米洞石,表干后用灰刀刮出洞石纹理,随即用批刀压平收光;
 - 完全干燥后用400目细砂纸轻磨表面,滚涂两遍防尘罩面漆。

EN.

Product Introduction /

Rice Travertine is an environmentally friendly art paint that imitates the texture of natural travertine. It is made of natural mineral powder (such as limestone, marble powder), redispersible latex powder and inorganic pigments.

Environmental safety /

- It has no radioactive pollution, does not contain harmful substances such as formaldehyde and benzene, and has passed national environmental protection tests.
- Some products have a "molecular sieve" structure that can absorb free formaldehyde and odor in the air and release negative oxygen ions.

Excellent physical property /

- Durability: high hardness, scrub resistance, crack resistance, and strong weather resistance.
- Functionality: breathable and moisture-proof, fire-retardant.
- Lightweight: Only 1/3 the weight of natural stone, reducing the wall load.

Outstanding decorative effect /

- The texture is realistic and natural, and the color can be customized.
- The surface can be polished to give it a velvety or stone texture.
- A large area presents the effect of imitating natural weathering, giving a sense of vicissitudes and heaviness.

Construction /

1. Construction area and dosage of dry powder travertine
 - Specification: 20kg/barrel
 - Dosage: Coarse sand: 1.5-2kg/m²; Fine sand: 1-1.5kg/m²
2. Construction tools
 - stainless steel knife, putty knife, wool roller, stirrer, fine sandpaper
3. Construction method
 - Roll on one coat of penetrating primer.
 - Roller apply two coats of sand primer.
 - The ratio of dry powder to water is 30%, stir until there is no particle slurry.
 - Apply two coats of rice travertine. After the surface is dry, use a putty knife to scrape out the travertine texture, and then use a trowel to flatten and polish it.
 - After it is completely dry, lightly sand the surface with 400 grit fine sandpaper, roller-coat dust cover topcoat twice.



稻草漆

STRAW PAINT

怀旧又不失时尚·复古更具艺术化



干粉稻草漆细砂-洋葱白(90ML/20KG)



干粉稻草漆中砂-洋葱白(90ML/20KG)



干粉稻草漆粗砂-洋葱白(90ML/20KG)

因基层、施工环境、施工人员和工具的差异，样板和实际施工效果可能会略有不同，敬请谅解!

稻草漆

STRAW PAINT

怀旧又不失时尚·复古更具艺术化



原色



锡兰象牙(3ML/20KG)



月光黄(3ML/20KG)



姜灰黄(30ML/20KG)



橄榄黑(60ML/20KG)



橄榄黑(120ML/20KG)



铁黄(30ML/20KG)

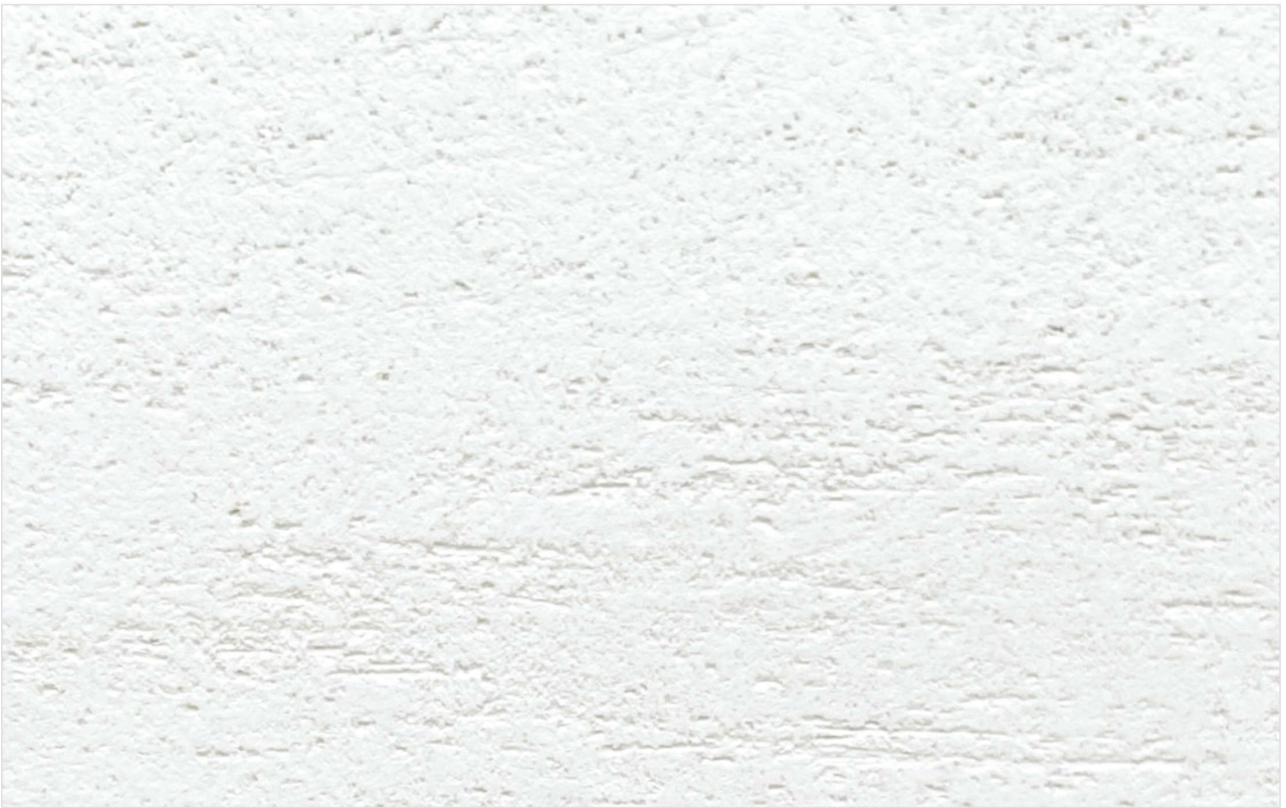


蓝宝石明黄(60ML/20KG)



玛瑙棕(60ML/20KG)

因基层、施工环境、施工人员和工具的差异，样板和实际施工效果可能会略有不同，敬请谅解！



干粉米洞石粗砂-原色



干粉米洞石细砂-原色

米洞石

RICE TRAVERTINE

天然洞石纹理·低调奢华



象牙白(7.5ML/20KG)



可可蛋奶(15ML/20KG)



可可糖(30ML/20KG)



菱花白(7.5ML/20KG)



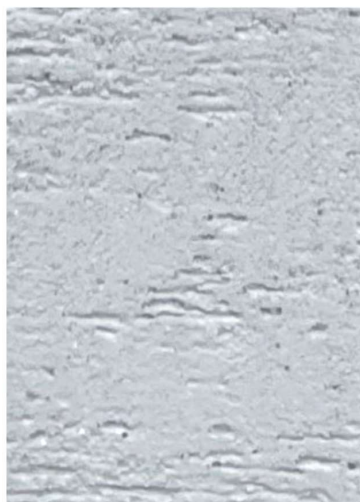
奶咖(15ML/20KG)



荷兰乳酪(30ML/20KG)



轻纱(7.5ML/20KG)



太空漫步(15ML/20KG)



银烛台(30ML/20KG)

——天然矿物肌理——防火防潮——定制随心——



稻草漆

应用场景 | Application Scenario

适用于别墅、酒店、民宿、服装店、茶室、艺术馆、农家乐等内外墙装饰使用。

Ideal for Villas, hotels, homestays, clothing stores, teahouses, art galleries, farmhouses, etc. for interior and exterior wall decoration.

米洞石

应用场景 | Application Scenario

适用于别墅、高级洋房、山庄、酒店大堂、咖啡厅等各种中高档建筑的外墙装饰和保护。

Ideal for Exterior wall decoration and protection of various mid-to-high-end buildings such as villas, high-end houses, mountain resorts, hotel lobbies, cafes, etc.